



TEMPUR-Ergo® Plus

Complete Reference Guide



## LIMITED WARRANTY FOR TEMPUR-ERGO® PLUS

---

TEMPUR-PEDIC NORTH AMERICA, LLC (“TEMPUR-PEDIC”) WARRANTS THAT IT WILL, AT TEMPUR-PEDIC’S OPTION, REPLACE OR REPAIR PURCHASER’S TEMPUR-ERGO® PLUS MODEL IF IT IS DEFECTIVE DUE TO FAULTY WORKMANSHIP OR MATERIALS, SUBJECT TO THE LIMITATIONS DESCRIBED IN THIS WARRANTY.

TEMPUR-PEDIC UNDERTAKES NO RESPONSIBILITY FOR THE QUALITY OF THE GOODS EXCEPT AS OTHERWISE PROVIDED IN THIS WARRANTY. THERE ARE NO WARRANTIES THAT EXTEND BEYOND THE DESCRIPTION ON THE FACE THEREOF.

THIS WARRANTY APPLIES ONLY TO TEMPUR-ERGO® PLUS MODEL. THIS MODEL MAY BE IDENTIFIED BY REFERENCE TO THE SERIAL NUMBER ON THE PRODUCT.

### **YEARS 1 THROUGH 3: FULL COVERAGE OF PARTS AND LABOR**

TEMPUR-Ergo® Plus is warranted against defects in the workmanship or materials for a period of three (3) years from the warranty commencement date. During these first three years of the warranty, the entire product is so covered, including factory supplied electronics, electrical components, drive motors and power supply components. Upon notice during the first through third year from the warranty commencement date, Tempur-Pedic will send replacement parts to the purchaser, at no cost, in order to replace any such defective part. In addition, Tempur-Pedic will pay all authorized labor and transportation costs associated with the repair or replacement of any parts which Tempur-Pedic determines to be defective. This three (3) year warranty shall not apply if the purchaser does not return any and all defective parts to Tempur-Pedic within 15 days of purchaser’s receipt of such replacement parts furnished. Return of the frame, however, should it need to be replaced, is not required.

In no instance will this warranty cover any damage attributable to misuse or to normal wear and tear or to excessive weight placed upon the product. Nor will this warranty cover any purchaser other than the original purchaser nor will it cover product purchased from an unauthorized third party. If you are not the original purchaser of this product, you take “as is” and “with all faults.” If you did not purchase this Tempur-Pedic TEMPUR-Ergo® Plus we will require proof of purchase from you demonstrating that you are the original purchaser and are eligible to make a valid claim under this Warranty.

### **YEARS 4 THROUGH 5: FULL COVERAGE OF PARTS ONLY**

Upon notice during the years four (4) and five (5) from the warranty commencement date, Tempur-Pedic will offer replacement parts for any defective parts to the purchaser. Factory supplied electronics, electrical components, drive motors and power supply components are included. This two (2) year Warranty shall not apply if purchaser does not return any and all defective parts to Tempur-Pedic within 15 days of purchaser’s receipt of replacement part. Purchaser shall bear all service, transportation, labor and shipping costs related to the delivery and/or replacement of the defective part.

### **FRAME ONLY—YEARS 1 THROUGH 25 WARRANTY**

Notwithstanding the above, Tempur-Pedic extends a 25 Year Warranty on the frame itself used in this product. Specifically, Tempur-Pedic warrants that for a full 25 years, any defect in the workmanship or the materials used in the frame itself shall be covered. The 25 year time span will be dated from the commencement of this warranty. For purposes of this 25 Year Warranty, the frame consists of the metal structure of the base and specifically excludes its cover, its side rails, decking and legs, actuator lift motors, control box, remote controls, power supply, and any power supply cords. Return of the frame should it need to be replaced, is not required.

## ADDITIONAL TERMS AND CONDITIONS

In no instance will this warranty cover any damage attributable to misuse or to normal wear and tear or to excessive weight placed upon the product. Nor will this warranty cover any purchaser other than the original purchaser nor will it cover product purchased from an unauthorized third party. If you are not the original purchaser of this product, you take “as is” and “with all faults.” If you did not purchase this Tempur-Pedic® TEMPUR-Ergo® Plus directly from Tempur-Pedic we will require proof of purchase from you demonstrating that you are the original purchaser and eligible to make a valid claim under this Warranty.

This Warranty does not include coverage for damage caused by the purchaser or by other users if the product has been used in a manner inconsistent with the operation and maintenance procedures outlined in the Complete Reference Guide, this Warranty, or any other applicable document published or approved by Tempur-Pedic. Nor does it include coverage if the product has been repaired or modified by the purchaser or by an unauthorized third party or if the product has been damaged in transit. This Warranty does not apply to damage to mattresses, fabric, cables, electrical cords or items supplied by Resellers, as defined below. Contact the Reseller or other appropriate party for warranty information on these items. Nor does this Warranty apply to any unnecessary service calls, including costs for in-home service calls solely for the purpose of educating the consumer about the unit or finding an unsatisfactory power connection. In addition, if the recommended weight restrictions are not followed (Twin, Twin Long, Double, Queen, and Split/Dual CA King bases – up to 650 lbs. each) this Warranty is void.

Replacement parts may be new or reconditioned at Tempur-Pedic's discretion.

Except for the 25 Year Warranty provided for the frame of this product, there is no warranty at all after five years, dating from commencement of this Limited Warranty.

## ADDITIONAL LIMITATIONS ON WARRANTY COVERAGE

In the event a warranty claim is filed and a warranty replacement is deemed necessary, purchaser will be required to surrender the original product, including any components, to Tempur-Pedic at the time of the replacement. Return of the frame, however, should it need to be replaced, is not required.

Repairs to or replacement of the Tempur-Pedic® TEMPUR-Ergo® Plus model or its components under the terms of this Limited Warranty will apply to the original warranty period and will not serve to extend such period. This Warranty begins on the “warranty commencement date” which is the date of purchase for new unused products.

If you did not purchase this Tempur-Pedic® TEMPUR-Ergo® Plus model directly from Tempur-Pedic, proof of purchase will be required to demonstrate that you are the original purchaser and eligible to make a valid claim under this Warranty.

If original proof of purchase is not provided by the purchaser, Tempur-Pedic reserves the right to determine if the unit is covered, or is not covered, by this Warranty and may use the manufacturing date as the warranty commencement date.

The decision to repair or to replace defective parts under this Limited Warranty shall be made by Tempur-Pedic at its option and at its sole discretion. Except for the Warranty provided for the frame of this product, there is no warranty at all after five years, dating from commencement of this Limited Warranty.

**TEMPUR-PEDIC SHALL NOT BE LIABLE FOR INCIDENTAL OR CONSEQUENTIAL DAMAGES RESULTING FROM THE USE OF THIS PRODUCT OR ARISING OUT OF ANY BREACH OF THIS WARRANTY. THE EXCLUSIVE REMEDY FOR BREACH OF THIS WARRANTY SHALL BE REPLACEMENT OR CREDIT TOWARDS REPLACEMENT AS SET FORTH HEREIN. THERE ARE NO EXPRESS OR IMPLIED WARRANTIES, INCLUDING IMPLIED WARRANTIES OF MERCHANTABILITY AND FITNESS FOR A PARTICULAR PURPOSE, OTHER THAN THE WARRANTY DESCRIBED ON THE FACE OF THIS LIMITED WARRANTY.**

Some states do not allow the exclusion or limitation of incidental or consequential damages, so the above limitation or exclusion may not apply to every purchaser. This Warranty gives the purchaser specific legal rights, and the purchaser may also have other legal rights, which may vary from state to state. This Warranty is valid in all 50 states, Puerto Rico and Canada.

If you the purchaser experience any problem with your TEMPUR-Ergo® Plus during the warranty period, please consult the troubleshooting section of your Reference Guide. If the problem persists, please contact Tempur-Pedic's Customer Service Department by calling toll-free 1-800-821-6621 or by sending an email to [customer.service@tempurpedic.com](mailto:customer.service@tempurpedic.com).

**PLEASE RETAIN THIS WARRANTY PAPERWORK AND ORIGINAL SALES RECEIPT FOR EASY FUTURE REFERENCE AND DOCUMENTATION.**

## Table of Contents

<b>SAFETY PRECAUTIONS</b> .....	5
<b>COMMONLY ASKED QUESTIONS AND ANSWERS</b> .....	9
<b>SPECIFICATIONS</b> .....	10
<b>INSTALLATION</b>	
<b>Installation Instructions</b> .....	11
<b>Pre-Delivery Procedure</b> .....	12
<b>Delivery Procedure</b> .....	13
<b>Headboard Installation</b> .....	15
<b>OPERATION</b>	
<b>Wireless Remote Control Features</b> .....	17
<b>Operating Instructions</b> .....	18
<b>SPECIAL FUNCTIONS</b>	
<b>System Reset</b> .....	19
<b>Emergency Power-Down</b> .....	19
<b>ADVANCED REMOTE CONTROL PROGRAMMING</b>	
<b>Programming Remotes</b> .....	20
<b>Change from Tandem System to Single System</b> .....	21
<b>TROUBLESHOOTING</b> .....	22



Conforms to UL Standard 962.  
 Certified to CSA Standard  
 C22.2 No. 68.

**CUSTOMER SERVICE: 1-800-821-6621**

## Safety Precautions

---

**WARNING!**  
**IMPORTANT SAFETY INSTRUCTIONS.**  
**PLEASE READ THESE INSTRUCTIONS THOROUGHLY BEFORE USING THIS PRODUCT.**  
**SAVE THESE INSTRUCTIONS!**

Your TEMPUR-Ergo® Plus system has been designed to provide you with the reliable operation and durability you expect. This product has been inspected and tested prior to shipment.

When using an electrical furnishing, basic precautions should always be followed, including the following:

**READ ALL INSTRUCTIONS BEFORE USING YOUR TEMPUR-ERGO PLUS.**

### **DANGER**

To reduce the risk of electric shock:

- Always unplug this furnishing from the electrical outlet before cleaning.

### **WARNING!**

To reduce the risk of burns, fire, electric shock, or injury to persons:

- Unplug from outlet before putting on or taking off parts.
- Close supervision is necessary when this furnishing is used by, or near children, invalids, or disabled persons.
- Use this furnishing only for its intended use as described in these instructions. Do not use attachments not recommended by the manufacturer.
- Never operate this furnishing if it has a damaged cord or plug, is not working properly, has been dropped or damaged, or dropped in water. Return the furnishing to a service center for examination and repair.

- Keep the cord away from heated surfaces.
- Never operate the furnishing with the air openings blocked. Keep the air openings free of lint, hair and the like.
- Never drop or insert any object into any opening.
- Do not use outdoors.
- Do not operate where aerosol (spray) products are being used or where oxygen is being administered.
- To disconnect, turn all controls to the off position, then remove plug from outlet.

### **WARNING!**

**Risk of Injury – keep children away from extended foot support (or other similar parts).**

## SAVE THESE INSTRUCTIONS!

### GROUNDING SAFETY

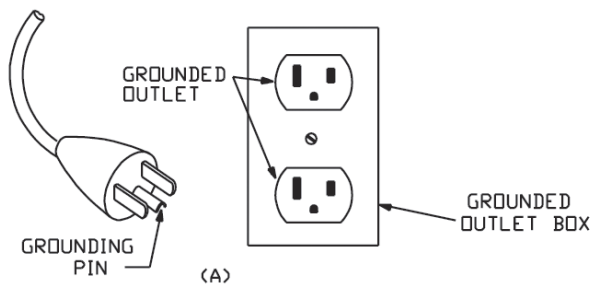
*Unauthorized modifications could void the electrical portion of your warranty.*

### GROUNDING INSTRUCTIONS

This product must be grounded. If it should malfunction or breakdown, grounding provides a path of least resistance for electric current to reduce the risk of electric shock. This product is equipped with a cord having an equipment-grounding conductor and a grounding plug. The plug must be plugged into an appropriate outlet that is properly installed and grounded in accordance with all local codes and ordinances.

**DANGER: Improper connection of the equipment-grounding conductor can result in a risk of electric shock. Check with a qualified electrician or serviceman if you are in doubt as to whether the product is properly grounded. Do not modify the plug provided with the product—if it will not fit the outlet. have a proper outlet installed by a qualified electrician.**

This product is for use on a nominal 120-volt circuit and has a grounding plug that looks like the plug illustrated in sketch A (see figure below). Make sure that the product is connected to an outlet having the same configuration as the plug. No adaptor should be used with this product.



**FOR BEST RESULTS, YOUR TEMPUR-Ergo® PLUS SHOULD BE PLUGGED INTO A SURGE PROTECTOR (not included).**

### WARRANTY PRECAUTION!

**Do not open** control box, motors or wireless remote control (with the exception of the battery compartments). The warranty is **void** if these units are tampered with. Any repair or replacement of TEMPUR-Ergo Plus parts must be performed by an authorized service person.

### **IN-HOME USE AND HOSPITAL DISCLAIMER**

Your TEMPUR-Ergo Plus is strictly designed for **in-home use only**. It is NOT designed for hospital use and is NOT designed to meet hospital standards. **DO NOT USE** this bed with TENT TYPE oxygen therapy equipment or near explosive gases.

## WARNING!

DO NOT USE NEAR PEOPLE USING OR WEARING MEDICAL DEVICES. FOR HOUSEHOLD / RESIDENTIAL USE ONLY. DO NOT USE OUTDOORS.

## CAUTION!

RISK OF ELECTRIC SHOCK. DRY LOCATION USE ONLY.

## IMPORTANT SAFETY FEATURES

Use this furnishing only for its intended use as described in these instructions. Do not use attachments not recommended by the manufacturer.

If there is an overload weight condition on the head or foot mechanism, the control unit will automatically stop the corresponding functions. Once the excess weight is removed, the control unit will automatically allow all functions to resume.

Locking casters are available for aftermarket purchase. In order to prevent the movement of this product with casters, all four casters should be in the locked position. This can be accomplished by pushing down the locking latch on the caster. To resume mobility of the product, lift the locking latch up. You are strongly encouraged to place rubber caster cups or carpet squares under the casters in addition to locking them in place if the product is positioned on a hard surface floor such as hardwood, tile or linoleum. Although the casters are locked and will not roll, they may slide.

## USER-SERVICEABLE PARTS

This product is specifically designed to be maintenance-free for the user. Therefore, you are encouraged not to open any motors, alter the wiring, or adjust, modify or change the structure of the product, as it will void the warranty.

## POWER RATINGS:

**MODEL NO: ADP-73AR**

**INPUT: AC 120V VAC, 60 HZ, 2.0 A MAX**

**OUTPUT: 29VDC**

**RATED CURRENT: 2.5A MAX.**

**CONTROL ACTUATOR: 2**

## SMALL CHILDREN AND PETS WARNING

After your TEMPUR-Ergo® Plus has been unboxed, immediately dispose of packaging as it can smother small children and pets. To avoid injury, children and pets should not be allowed to play on or under the bed. Children should not operate this product without adult supervision. Close supervision is necessary when this furnishing is used by, or near children, invalids, or disabled persons.

## SAVE THESE INSTRUCTIONS!

Your TEMPUR-Ergo Plus has been designed to provide you with the reliable operation and durability you expect. This product has been inspected and tested prior to shipment.

## SERVICE REQUIREMENTS

Service technicians are not responsible for moving furniture, removing headboards and footboards or any items required to perform maintenance on your adjustable bed. In the event the technician is unable to perform service due to lack of accessibility, the service call will be billed to the purchaser and the service will be re-scheduled.



## RADIO FREQUENCY IS 433 MHZ.

### FCC COMPLIANCE

THIS device complies with part 15 of the FCC Rules. Operation is subject to the following two conditions: (1) This device may not cause harmful interference, and (2) this device must accept any interference received, including interference that may cause undesired operation.

TO comply with the FCC RF exposure compliance requirements, no change to the antenna or the device is permitted. Any change to the antenna or the device could result in the device exceeding the RF exposure requirements and void user's authority to operate the device.

## PRODUCT RATINGS

The lift motors in your TEMPUR-Ergo® Plus are **NOT** designed for continuous use. Reliable operation and full life expectancy will be attained as long as the lift motors do not operate more than two (2) minutes over an 20-minute period, or approximately 10% duty cycle. Any attempt to circumvent or exceed this rating will shorten the life expectancy of this product and may void the warranty. The recommended weight restrictions on our TEMPUR-Ergo Plus systems are as follows: Twin, Twin Long, Double, Queen, and Split/Dual CA King bases – up to 650 lbs. each. This TEMPUR-Ergo Plus will structurally support the recommended weight distributed evenly across the head and foot sections. This product is not designed to support or lift this amount of weight in the head or foot sections alone.

**NOTE: Exceeding the recommended weight restrictions could damage your TEMPUR-Ergo Plus and void your warranty.**

For best performance, you should enter and exit the TEMPUR-Ergo Plus while it is in the flat or fully lowered position.

## INTENDED USAGE

The electric adjustable bed should be installed with the Headboard Bracket and/or the head of the frame should be positioned close to a wall.



## Commonly asked Questions and Answers

---

### **WHAT IS THE HEIGHT OF THE TEMPUR-ERGO® PLUS ADJUSTABLE BASE?**

With standard legs installed, the overall height is approximately 15 1/4 inches floor to the bottom of the mattress. The distance between the floor and the bottom edge of the base, with standard legs installed, is approximately 12 inches. See chart on page 10 for other options.

### **IS IT POSSIBLE TO RAISE THE HEIGHT OF THE TEMPUR-ERGO PLUS?**

The height of the TEMPUR-Ergo Plus can be adjusted from approximately 7 3/4 inches to approximately 15 1/2 inches with leg and caster sets available from Tempur-Pedic. See the chart on page 10 for available options.

### **WHICH LEGS ARE COMPATIBLE WITH THE 2-INCH LEG EXTENDERS?**

The 2-inch leg extenders can be used with the 12-inch standard leg only.

### **DOES THE TEMPUR-ERGO PLUS COME WITH FOOTBOARD ATTACHMENTS?**

The TEMPUR-Ergo Plus is not designed to be attached to a bed footboard. However, you can use a “freestanding” bed including headboard, footboard and side rails by placing the complete TEMPUR-Ergo Plus within the assembled bed. It may be easiest to assemble the bed around the adjustable base. You should measure the inside dimensions of the assembled bed to be sure the adjustable base will fit. One of our riser leg sets may be required in some cases.

### **WHERE IS THE SERIAL NUMBER ON THE TEMPUR-ERGO PLUS?**

The serial number can be found on the law tag attached to the cover, the power supply under the base and on the frame just below the foot end of the base. It may be easier to see by lifting the foot section slightly if possible.

### **WILL THE TEMPUR-ERGO PLUS FIT INSIDE EXISTING FURNITURE?**

The TEMPUR-Ergo Plus is designed to fit into most “freestanding” beds. We always recommend you measure the inside dimensions of the assembled bed to be sure the TEMPUR-Ergo Plus will fit. Please refer to the specifications on page 10 for dimensions of the base. One of our riser leg sets may be required in some cases to adjust height. The adjustable base should not be used in conjunction with bed slats. The weight of the base can cause slats to break. Slats should be removed or the base height should be adjusted such that the base stands above the slats and the slats bear no weight.

### **DOES THE UNIT HAVE AC OR DC MOTORS?**

The lift motors used on the TEMPUR-Ergo Plus are DC motors. The base’s power supply converts the AC power from the wall outlet to DC power.

### **WHO DO I CALL FOR SERVICE OR SUPPORT IF NEEDED?**

Service and technical support are available by calling our dedicated customer service group at 1-800-821-6621. An owner’s manual is included with each base including other information for making warranty claims.

### **IS AN EXTENDED WARRANTY AVAILABLE?**

No.

### **DO I GET A FULL WARRANTY IF I PURCHASE A FLOOR MODEL?**

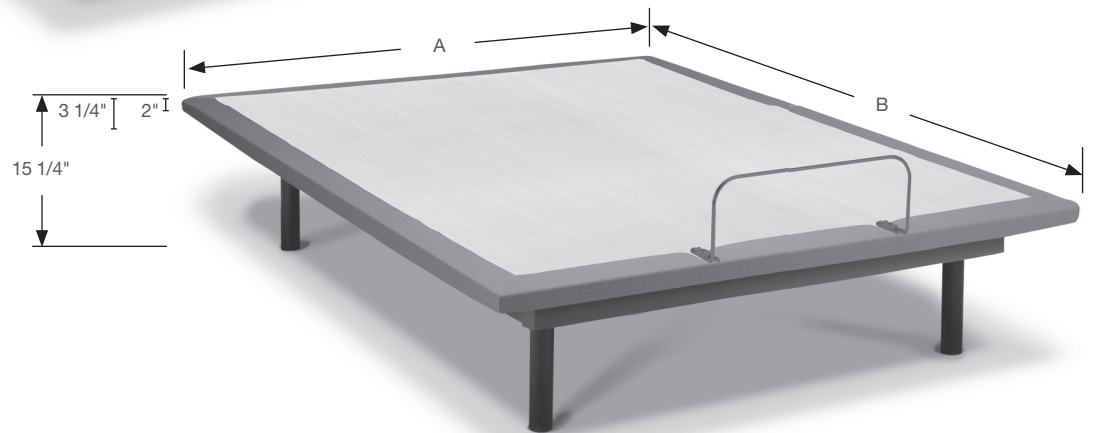
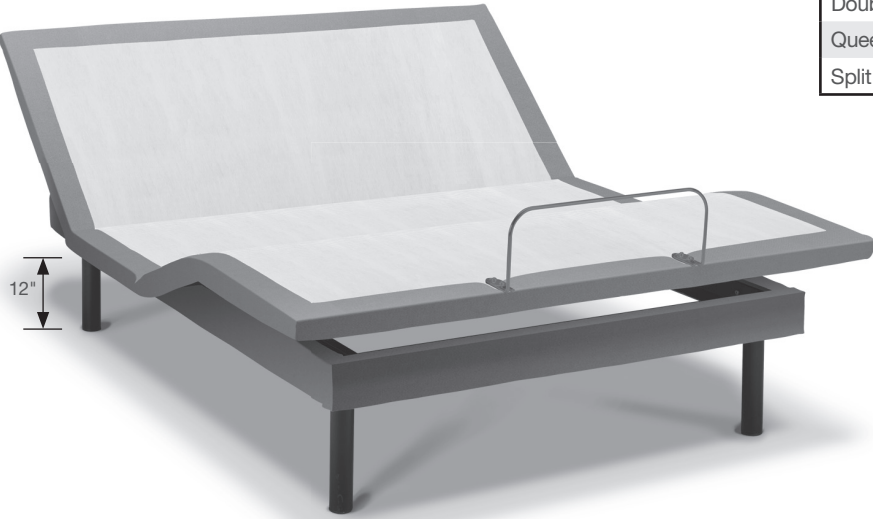
Yes. However, your warranty start date is the date of manufacture which is clearly marked on the law tag attached to the base (not your actual purchase date).

### **WHAT ARE THE ELECTRICAL REQUIREMENTS OF THE TEMPUR-ERGO PLUS?**

This product is for use on a 120-volt circuit. It requires approximately 2.5 A of electricity.

## Specifications

Bed Type	A. Base Width	B. Base Length	Product Weight
Twin	37.8"	74.8"	110 lb
Twin Long	37.8"	78.8"	110 lb
Double	53.2"	74.8"	136 lb
Queen	58.3"	78.8"	141 lb
Split CA King	35.8"	82.7"	108 lb



Measurements are approximate and based on standard 12-inch leg.

**NOTE: 2-inch extender approved for use with standard 12-inch leg only.**

	Option 4.5" LEG	Option 4.5" LEG WITH CASTER	Option 6.5" LEG	Option 6.5" LEG WITH CASTER	Option 9" LEG	Option 9" LEG WITH CASTER	Standard 12" LEG	Option 12" + 2" LEG EXTENDER
<p>Total height: Legs + Base</p>	7.75"	10.25"	9.75"	12.25"	12.25"	14.75"	15.25"	17.25"

CUSTOMER SERVICE: 1-800-821-6621

## Installation Instructions

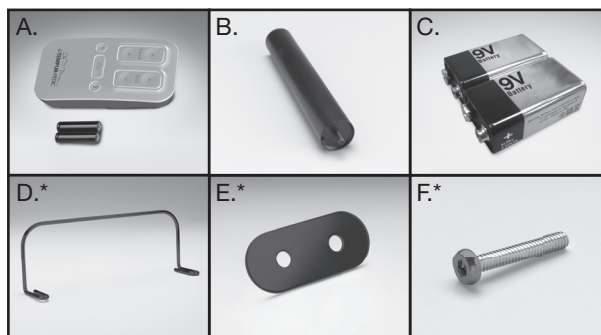


Before discarding any packing materials, check your TEMPUR-Ergo® Plus carton and verify the following items in the parts list are included:

### PARTS LIST

- A. Wireless Remote Control (1) and AA Batteries (2)
- B. Legs (4)
- C. 9-Volt Batteries (2)
- D. Mattress Retainer Bar (1)\*
- E. Retainer Bar Plate (2)\*
- F. Retainer Bar Bolt (4)\*

\*Attached to base for shipping.  
Appearance of some parts may differ from photos.



## Pre-Delivery Procedure

### STEP 1

Lift carton top off box to reveal the bottom of the base.

### STEP 2

Using a power extension cord to reach the base, plug in the base's power cord.

**NOTE: Do not uncoil the base power cord which is packaged for shipment.**

### STEP 3

Slide the cover off the battery compartment on the power supply and install the provided (2) 9-Volt batteries. Replace the battery compartment cover.

**NOTE: Do not mix old and new batteries.**

### STEP 4

Remove the remote control and (2) AA batteries from the accessory pack, remove the cover from the remote control's battery compartment, and install the batteries.

**NOTE: Do not mix old and new batteries.**

### STEP 5

Power Test Procedure:

Press each of the following buttons long enough to illuminate the blue back light on the remote control, and watch/listen for the base to activate. This ensures you will be delivering a base that is fully functional. Test the base by pressing the buttons in the following sequence.

1. Head Lift
2. Leg Lift
3. Flat

**NOTE: Only press each button long enough to hear or see the function activate on the base.**

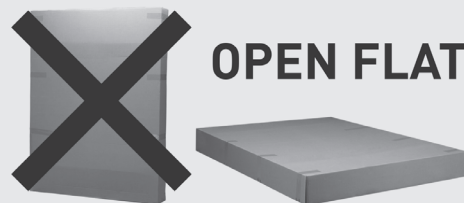
### STEP 6

Once the warehouse test is successful and complete:

- Unplug the power extension cord
- Remove the batteries from the remote control and power supply and return both to the accessory pack
- Place the lid back on the outer carton and secure for delivery

**NOTE: Always keep the Ergo base in a flat, horizontal position during transportation and delivery.**

**NOTE: To avoid damage to the TEMPUR-Ergo® Plus, always open the carton while the bed is in the flat position.**



## Delivery Procedure

**NOTE:** Always keep the TEMPUR-Ergo® Plus in a flat, horizontal position during transportation and delivery. Always open the box in the flat position.

### STEP 1

Carefully take base in the carton to the bedroom and place next to where the customer wants it set up.

### STEP 2

Carefully lift the TEMPUR-Ergo Plus out of the shipping carton, keeping the unit topside down. For safety reasons, this should be performed by two people.



**OPEN FLAT**

**NOTE:** To avoid damage to the adjustable base, always open the carton while the bed is in the flat position.

### STEP 3

The products come packed in a cardboard box. Some components are also sealed in plastic film. To unpack, proceed as follows:

#### STEP 3A

Remove the cardboard and plastic film from the components.

#### STEP 3B

Check the package contents.

#### STEP 3C

Dispose of the packaging materials.

#### STEP 3D

Keep the user manual at hand for the operators.

### STEP 4

Remove the remote control and (2) AA batteries from the accessory pack, remove the cover from the remote control's battery compartment, and install the (2) AA batteries into the remote.



### STEP 5

Install (2) 9-Volt batteries into the battery compartment of the power supply.

**NOTE:** Do not mix old and new batteries.

### STEP 6

Attach TEMPUR-Ergo Plus Legs: Open the accessories box, take out the (4) legs, and thread them in a clockwise direction into the pre-threaded holes in the frame.

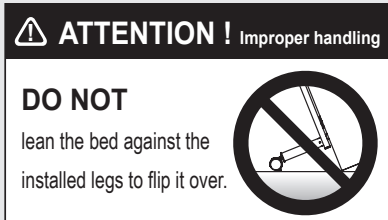
**NOTE:** Hand tighten the legs securely to the frame. DO NOT over tighten. Make sure the legs are screwed completely into the frame. Legs that are not securely attached may become unsafe. DO NOT unscrew a leg to compensate for an uneven floor.

**NOTE:** Locking casters are available for aftermarket purchase. In order to prevent the movement of this product, all four casters should be in the locked position.

## STEP 7

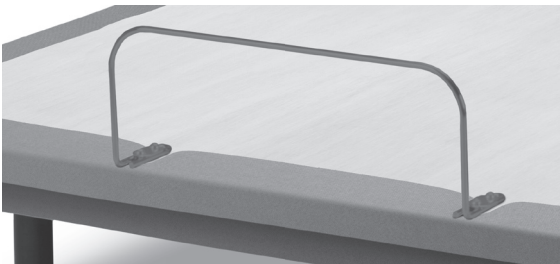
Carefully flip the TEMPUR-Ergo® Plus over to the topside up position.

**NOTE: Make sure to lift the adjustable base off the ground before flipping over. DO NOT use legs as a leverage point to ensure they do not break.**



## STEP 8

Remove Mattress Retainer Bar (D) and install in upright position using a hex head driver (provided).

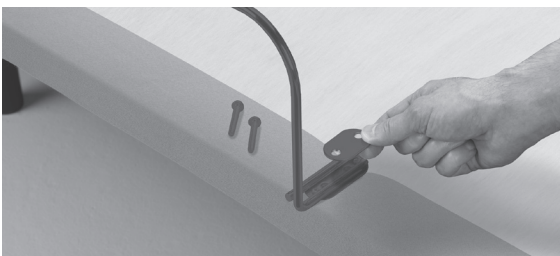


## STEP 8A

Line up Mattress Retainer Bar (D) to the edge of the foot of the bed.

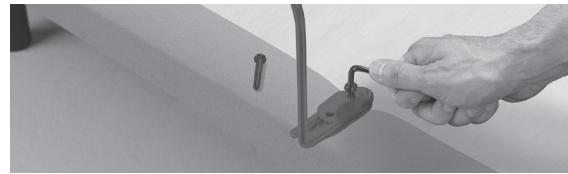
## STEP 8B

Line up the Retainer Bar Plate (E) over the Mattress Retainer Bar (D) so the threaded holes are lined up.



## STEP 8C

Start with the right side and insert two (2) Retainer Bar Bolts (F) through the holes of the Retainer Bar Plate (E), through the opening in the Mattress Retainer Bar (D), to the base. Do not over tighten.



## STEP 8D

Repeat bolt installation for the left side.

## STEP 8E

Ensure the Mattress Retainer Bar (D) is lined up to the edge of the bed and tighten all four Retainer Bar Bolts (F).

## STEP 9

If this delivery involves dual bases and/or split mattresses, program accordingly. (Program remote control(s) per the instructions on page 20.)

## STEP 10

Place the mattress(es) on the base(s).



## STEP 11

Ensure the power switch on the surge protector is in the "on" position and that it is plugged into the wall outlet. Check the system for functionality with the mattress in place.

**NOTE: If the system does not respond, follow the setup procedure again to ensure that the base and remote control are communicating.**



## Headboard Installation

The headboard kit is an add-on. It is not shipped standard with the product.

**NOTE:** This step is needed if using a headboard ONLY; not headboard, footboard and side rails.

**NOTE:** Failure to follow the proper headboard bracket installation instructions may result in damage to your TEMPUR-Ergo® Plus.

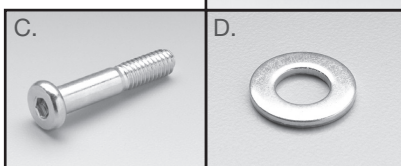
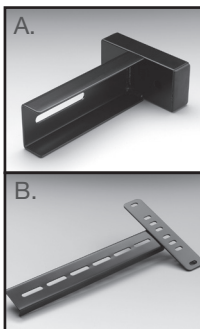
**WARNING:** The bottom of the headboard cross member must be positioned so that there is no more than 3 inches between the bottom of the headboard and the top of the mattress. Failure to follow this instruction could result in serious injury or death to a person or pet caught between the mattress and the headboard.

Before discarding any packing materials, check your Headboard Bracket Kit and verify the following items in the parts list are included:

### PARTS LIST

- A. Inner Headboard Bracket (2)
- B. Outer Headboard Bracket (2)
- C. Bracket Bolt (6)
- D. 5/16 Inch Washer (12)
- E. 5/16 Inch Locking Nut (6)
- F. Wrench (1)
- G. Allen Wrench (1)

*The two (2) Leg Clamp Brackets included in your kit (not shown) are pre-installed on this model.*



### STEP 1

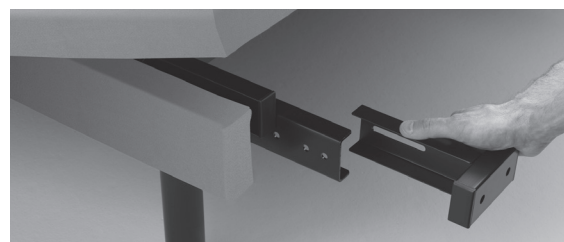
Assemble the Headboard Bracket:

#### STEP 1A

Use the wireless remote to raise the head of the bed so you can more easily gain access to the TEMPUR-Ergo Plus frame.

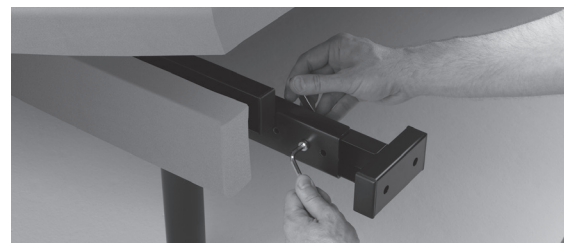
#### STEP 1B

Place the Inner Headboard Bracket (A) into the C-channel frame, making sure the bracket opening and the C-channel opening are facing each other. This will create a box shape. This step does not require you to loosen or remove any bolts on the delivered bed frame.



Place one (1) Bracket Bolt (C) with a 5/16 Inch Washer (D) through a predrilled hole in the C-channel frame and pass it through the Inner Headboard Bracket such that a distance of approximately 1 1/2 inches to 2 inches exists between the edge of the TEMPUR-Ergo Plus and the Headboard Bracket assemblies.

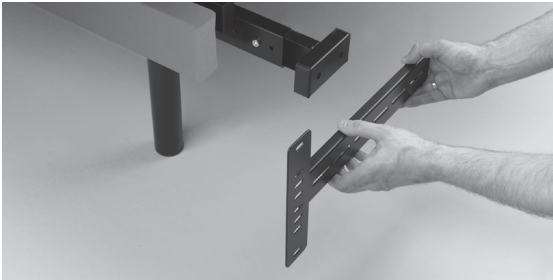
Use 5/16 Inch Washer (D) and 5/16 Inch Locking Nut (E) and hand tighten to allow for adjustment.



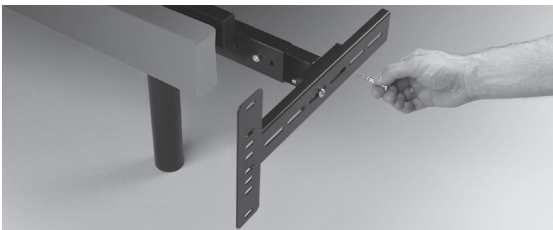
Repeat on other side of the frame.

### STEP 1C

Place the open side of the Outer Headboard Bracket (B) onto the exposed C-channel of the Inner Headboard Bracket (A). This will create a tight fit between (A) and (B).



Place two (2) Bracket Bolts (C) with a 5/16 Inch Washer (D) through the Outer Headboard Bracket (B) and into the Inner Headboard Bracket (A). Use 5/16 Inch Washer (D) and 5/16 Inch Locking Nut (E) and hand tighten to allow for adjustment.



Repeat on other side of the frame.

### STEP 1D

Ensure the Headboard Bracket is assembled with a distance of 1 1/2 inches (38.1 mm) to 2 inches (50.8 mm) between the edge of the Ergo System and the Headboard Bracket assemblies.

### STEP 2

Attach your headboard to the Headboard Brackets following the steps below:

#### STEP 2A

Measure the center-to-center distance of the mounting holes in your headboard.

### STEP 2B

Measure the center-to-center distance of the mounting holes in the Headboard Bracket assemblies.

#### STEP 2C

If the Headboard Brackets require adjustment, loosen the bolts that are holding the Outer Headboard Bracket (B) and move them so that the mounting holes on the Outer Headboard Bracket (B) align with the mounting holes on your headboard. Reinstall the bolts on the Outer Headboard Bracket (B) and firmly tighten.

#### STEP 2D

Place your headboard bolts through the mounting holes on both the Outer Headboard Bracket (B) and your headboard. Firmly tighten.

### STEP 3

Place your mattress on top of your TEMPUR-Ergo® Plus.



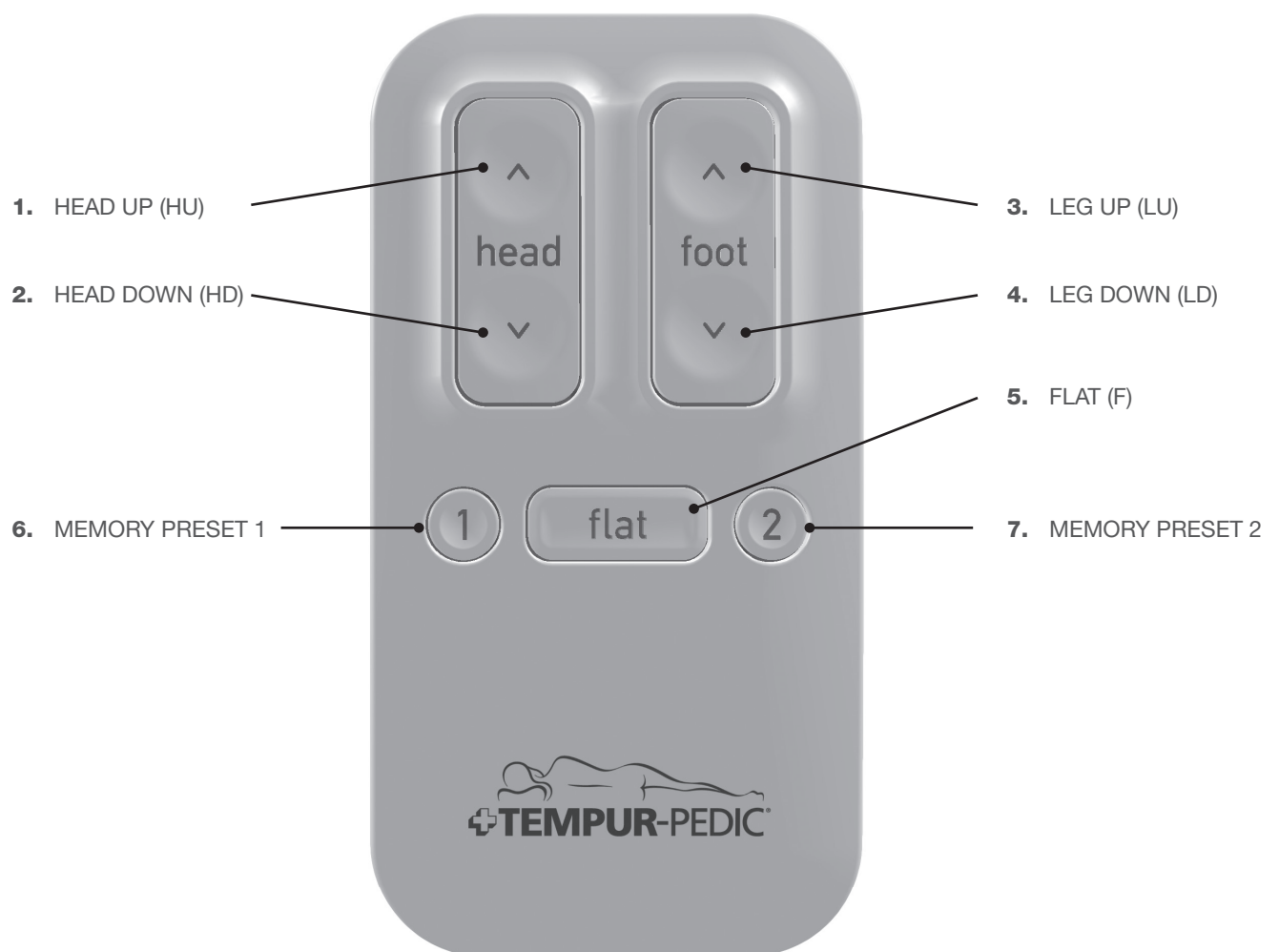
**WARNING: Verify the space between the headboard cross member and the top of the mattress is no more than 3 inches.**

Your TEMPUR-Ergo Plus installation is now complete. Refer to the Wireless Remote Control Features on the following pages for additional usage instructions.



## Wireless Remote Control Features

**READ ADVISORY INFORMATION IN THE SAFETY PRECAUTIONS SECTION OF THIS GUIDE CAREFULLY BEFORE USING THIS PRODUCT. THE POTENTIAL FOR ELECTRIC SHOCK EXISTS IF ELECTRICAL COMPONENTS ARE NOT INSTALLED OR OPERATED PROPERLY.**



## Operating Instructions

To ensure safe operation of the system, please observe the following safety instructions:

**CAUTION: Keep children away from electrically adjustable beds and control units. There is risk of injury and electric shock.**

**CAUTION: Unplug the power cord during a thunderstorm or if you do not intend to use the system for an extended period of time.**

**NOTE: Do not put the remote control button-side down.**

**NOTE: The actuators will continue moving until you release button or the maximum height is reached.**

### MANUAL ADJUSTMENT OF HEAD AND FOOT

#### Head (1,2)



This function adjusts the Head section to the desired position.

Press the **HEAD UP** button (1).

Keep pressing the button until the desired height is reached.

Press the **HEAD DOWN** button (2).

Keep pressing the button until the desired height is reached.

#### Leg (3,4)



This function adjusts the Leg section to the desired position.

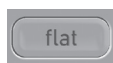
Press the **LEG UP** button (3).

Keep pressing the button until the desired height is reached.

Press the **LEG DOWN** button (4).

Keep pressing the button until the desired height is reached.

#### Flat (5)



Press and hold the **FLAT** button (5) for 3 seconds, and the bed frame will automatically move to its complete flat position.

**NOTE: Ensure all obstructions are clear of the base's undercarriage when lifting or lowering the base's head and leg sections to avoid risk of pinching or damage.**

**NOTE: When the movement to the flat position is active it is possible to interrupt the movement with ANY button at any time during movement for safety reasons.**

#### Preset Memory Positions (6,7)



The system offers two (2) Preset Memory Positions.

Hold either button for 5 seconds, until the lights flash three (3) times. When they stop, memory is stored.

**NOTE: When the new position of the head is higher than the current position of the head, first the head section and then the leg section move to the corresponding memory position.**

**NOTE: If the new position of the head is equal or lower than the current position of the head, first the leg section and then the head section move to the corresponding memory position.**

**NOTE: When the movement to a memory position is active it is possible to interrupt the movement with ANY button, at any time during movement for safety reasons.**

## System Reset

---

This function resets the system to the zero position.

A reset may be required in the following cases:

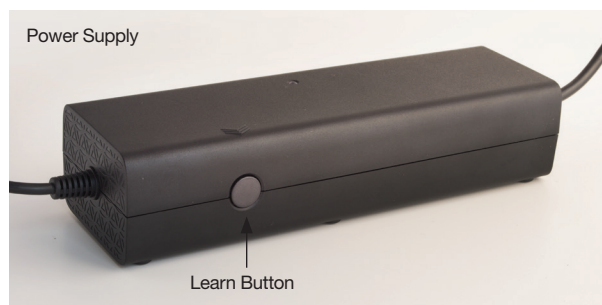
- One of the components is removed
- The bases don't work synchronously in tandem operation
- After a power outage (only for tandem operation)
- System error

---

### RESET PROCEDURE

Press and hold the **LEARN** button on either the Power Supply or the Control Box for 3 seconds, until the LED blinks. The LED will blink three (3) times. Then press the **LEARN** button five (5) times. The LED will blink quickly then remain on. The process is complete.

The **Reset Procedure** clears the memory, so the remote must now be learned. Refer to page 20 **Programming Remotes**.



## Emergency Lowering Procedure

---

When the two (2) 9-Volt batteries are installed in the power supply, and there is a power failure, the **LEARN** button on the Power Supply can be used to move the bed to a flat position.

---

### SINGLE SYSTEM

Press and hold the **LEARN** button on the Power Supply until the bed is in the flat position. After this procedure, the two (2) 9-Volt batteries must be changed.

**DANGER: Risk of pinching!**

**NOTE: Power-Down procedure only works when there is no power to the bed.**

**NOTE: Lowering speed may be reduced during the Emergency Lowering Procedure.**

---

### TANDEM OPERATION

#### STEP 1

Each base must be moved to the flat position separately by following the Single System **Emergency Lowering Procedure** instructions.

#### STEP 2

After this procedure the two (2) 9-Volt batteries of both power supplies must be changed.

**NOTE: Do not mix old and new batteries.**

## Programming Remotes

---

There are multiple ways to program the remote for your base, choose the section below that best corresponds with your set-up.

**NOTE: The wireless remote that shipped with your TEMPUR-Ergo® Plus is pre-programmed to be paired with your base.**

---

### SINGLE BASE OR TWO BASES OPERATING INDEPENDENTLY

---

#### STEP 1

Press and hold the **LEARN** button on the Power Supply or Control Box. The LED will blink three (3) times when ready.

#### STEP 2

Press any button on the new remote. The LED on the Power Supply or Control Box will blink two (2) times and then remain on once programmed.

---

### TWO BASES OPERATING IN TANDEM BY A SINGLE REMOTE

---

#### STEP 1

Put one remote (Remote 2) away in a safe and dry environment. Take the other remote (Remote 1) and press **HEAD UP** button (1) to identify which base (Base 1), is paired to it. The base which needs to learn a new remote is Base 2.

#### STEP 2

Press and hold the **LEARN** button on the Power Supply or Control Box for Base 2 until the LED blinks three (3) times. Now press the **LEARN** button two (2) times. The LED will turn off.

#### STEP 3

Press any button on Remote 1. The LED on the Power Supply and Control Box will blink two (2) times and remain on once programmed.

---

### TWO BASES OPERATING IN TANDEM BY TWO REMOTES

---

Follow the steps described in the previous section (**TWO BASES OPERATING IN TANDEM BY A SINGLE REMOTE**) using Remote 2 and Base 1.

## Change from a Tandem System to a Single System

---

This function will separate a Tandem System, resulting in two Single Systems. This will allow each base to be individually controlled by their respective remotes.

---

### **STEP 1**

Perform **System Reset** on page 19 for Remote 1 and Base 1.

---

### **STEP 2**

Perform **System Reset** on page 19 for Remote 2 and Base 2.

**NOTE: After both bases have been reset, the two remotes must be programmed with their respective bases. Refer to the Programming Remotes instructions on page 20, titled SINGLE BASE OR TWO BASES OPERATING INDEPENDENTLY.**

## Troubleshooting

In the event that your TEMPUR-Ergo® Plus fails to operate properly, investigate the symptoms and possible solutions provided in the chart below:

SYMPTOM	SOLUTION
<p>Blue LED Backlight illuminates and appears to be operable, but will not activate the TEMPUR-Ergo Plus.</p>	<ul style="list-style-type: none"> <li>• Verify that the power cord is plugged into a working, electrical outlet. <i>A grounded, electrical surge protection device is recommended.</i> Test the outlet by plugging in another working appliance.</li> <li>• Verify the control box is paired to the remote by following the <b>Programming Remotes</b> instruction on pages 20-21.</li> </ul>
<p>No features of the TEMPUR-Ergo Plus will activate.</p>	<ul style="list-style-type: none"> <li>• Verify the red LED light on the power supply is lit – if not, the unit is not receiving power.</li> <li>• Program the Wireless Remote Control (see the <i>Wireless Remote Control Guide</i>, included with this product, for programming procedures).</li> <li>• Unplug the power cord, wait 60 seconds and plug the power cord back in to reset the electronic components.</li> <li>• Your surge protection device and/or electrical circuit breaker may be tripped. Check both to verify.</li> <li>• Your surge protection device and/or electrical outlet may be defective. Test the outlet by plugging in another working appliance.</li> </ul>
<p>Blue LED Backlight will not illuminate.</p>	<ul style="list-style-type: none"> <li>• Replace the batteries in the Wireless Remote Control. The unit requires two (2) AA batteries.</li> <li>• Ensure the batteries are installed correctly.</li> </ul> <p><b>NOTE: Do not mix old and new batteries.</b></p>
<p>Head and/or Leg section will elevate but will not return to the horizontal (Flat) position.</p>	<ul style="list-style-type: none"> <li>• The TEMPUR-Ergo Plus may be obstructed. Elevate and check for an obstruction. Remove the obstruction.</li> <li>• The head section may be too close to the wall.</li> <li>• The headboard may be too close to the edge of the mattress. Verify that a 1 1/2 inch (38.1 mm) to 2 inch (50.8 mm) distance is between the headboard brackets and the mattress. Adjust if required.</li> </ul>

SYMPTOM	SOLUTION
Head and/or Leg lift function has minor interference during operation.	<ul style="list-style-type: none"><li>• Check batteries in Wireless Remote Control, replace with two (2) new AA batteries if necessary.</li></ul> <p><b>NOTE: Do not mix old and new batteries.</b></p> <ul style="list-style-type: none"><li>• Make sure that you are following the duty cycle of the motors (do not operate more than 2 minutes over a 20-minute period, or approximately 10% duty cycle).</li><li>• Press the lift buttons squarely and accurately.</li><li>• Wireless Remote Control may be experiencing common Radio Frequency Interference from other radio transmitting devices. Wait several seconds, and then try pressing appropriate button again. See <b>FCC Compliance Statement</b> on page 8 of this guide.</li></ul>
A clicking noise is heard under the bed when raising or lowering.	<ul style="list-style-type: none"><li>• This is normal. The lift motor relays “click” when they are engaged. No action is required.</li></ul>

Serial Number:

---

Write Serial Number here for future reference.

**FOR TECHNICAL SUPPORT OR SERVICE,  
QUESTIONS ABOUT YOUR TEMPUR-PEDIC® MATTRESS,  
OR TO ORDER TEMPUR-ERGO® PLUS ACCESSORIES:  
1-800-821-6621  
OR VISIT [WWW.TEMPURPEDIC.COM](http://WWW.TEMPURPEDIC.COM)**

